

sagemax.com

sagemax®



Sagemax experience

NexxZr T Multi
micro-layered
by Maria Docheva

NexxZr T Multi micro-layered
by Maria Docheva

Sagemax experience

Initial situation & smile design



The initial situation of the patient.



Outline of the corrections.



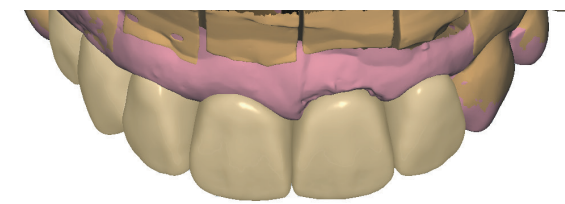
Design for the wax-up key.



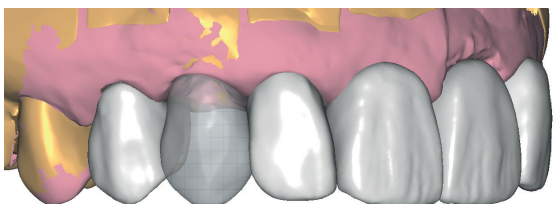
Transfer of the corrections to the mouth.



Digital design of the temporary restorations according to the initial design.



Digital design from another perspective.



Profile design of the bridge body.

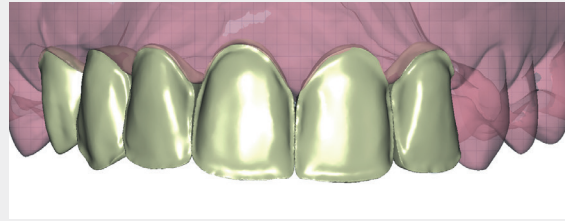


Adjustment of the temporary restorations in the mouth.

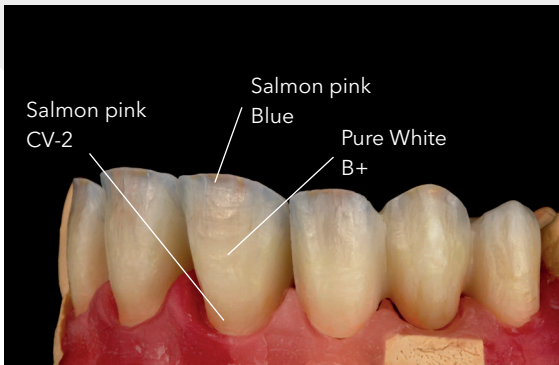
Cut-back design, internal staining & micro-layering



Transfer of adjustments to the monolithic design.



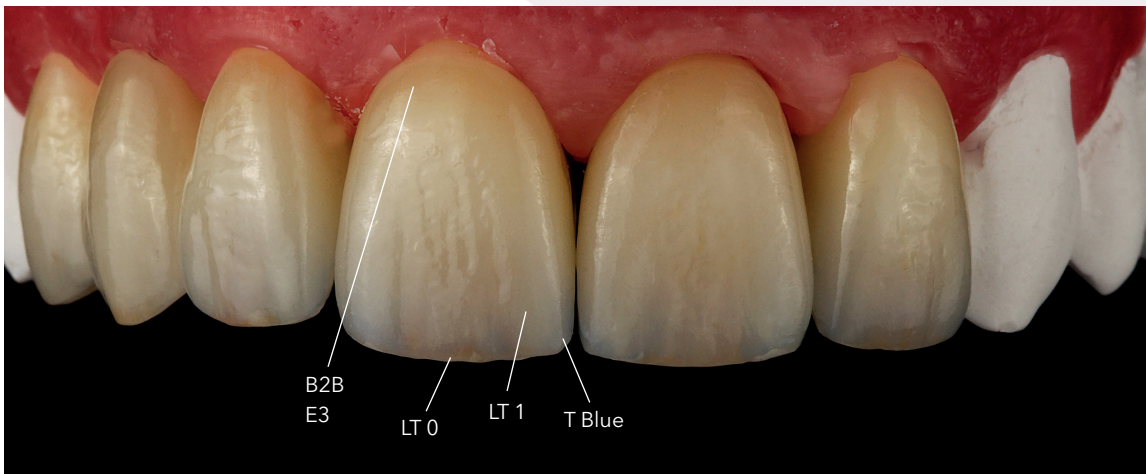
Reduction (cut-back) of the labial surfaces.



Internal staining with Noritake CZR (Co. Kuraray Noritake).



Design of the bridge body after micro-layering.



Micro-layering of the restorations with Noritake CZR (Co. Kuraray Noritake).



Polishing of the palatal surfaces with NexxZr Shine.



Checking the translucency.

Final result



Before.



After.





Finish in the mouth - 3 months after insertion.



Dental designer

Maria Docheva
Dental Technician, Bulgaria

 Maria Docheva
 @_mismee

Contact us
info@sagemax.com

sagemax.com

Follow us
@sagemax.official

