



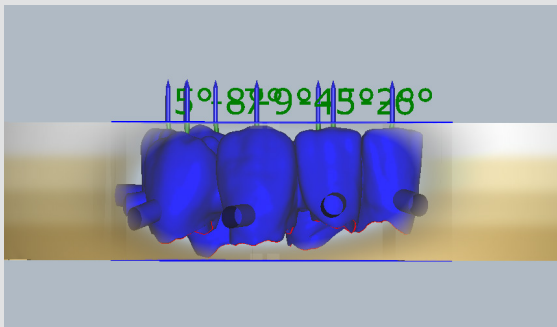
Sagemax experience

NexxZr T Multi
infiltrated
by Andrea Dalla Costa

NexxZr T Multi infiltrated
by Andrea Dalla Costa

Sagemax experience

Framework



Positioning in the disc.



Milled restorations from NexxZr T Multi A3.



Separation and rough grinding.



Customized texture.

Infiltration



Slightly intensify the marginal area with NexxZr T Coloring Liquid A2.



Homogenize the transition area between dentin and incisal with NexxZr Effect Coloring Liquid Incisal Enhancer.



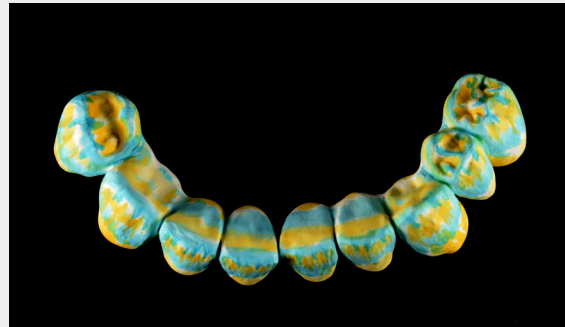
Slight increase in chroma in the incisal area with NexxZr T Coloring Liquid A1.



Indication of the mamelon structure with NexxZr Effect Coloring Liquid Brown.



Coloring of the incisal edge with NexxZr Effect Coloring Liquid Grey.



Completion of the infiltration.

Finishing



Optical appearance after sintering.



Glaze with NexxZr Glaze Spray.



Homogeneous uniform surface gloss on the entire restoration.



Optimal color match to the A-D shade guide.

Final result



Restorations after cementation.



Excellent integration into the surrounding oral cavity.

Dental designer



Andrea Dalla Costa
Dental Technician, Italy

 Andrea Dalla Costa

Contact us
info@sagemax.com

sagemax.com

Follow us
@sagemax.official

